



Kinetic**sense**

Best Practices



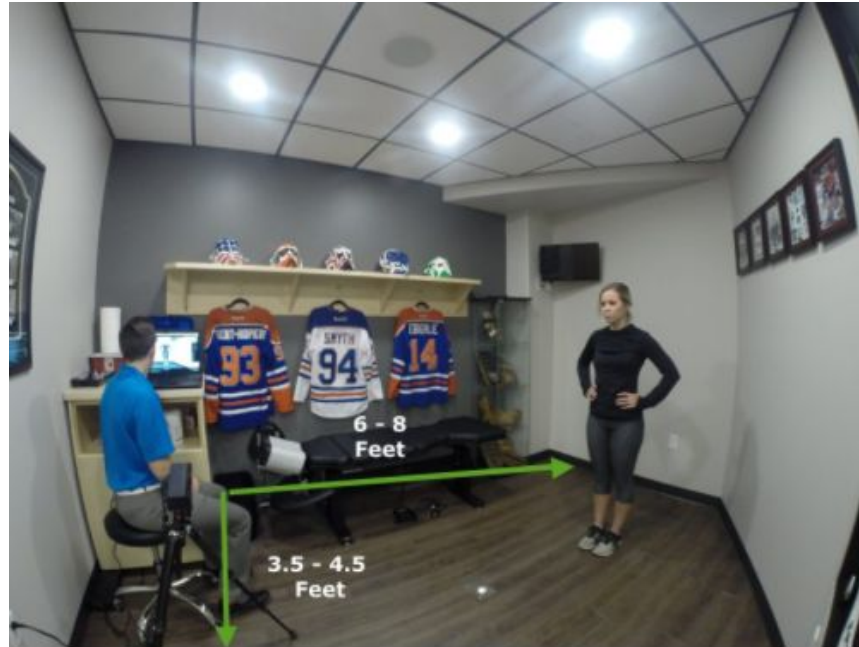
# Clinical Settings

There are many ways to use Kinetisense, there is no right or wrong way, just what's best for you. Below are a few examples some of practitioners that have used Kinetisense in their practice.

Obtain triplanar data that is compatible with EHR systems.



# Treatment Room





# High School Gym





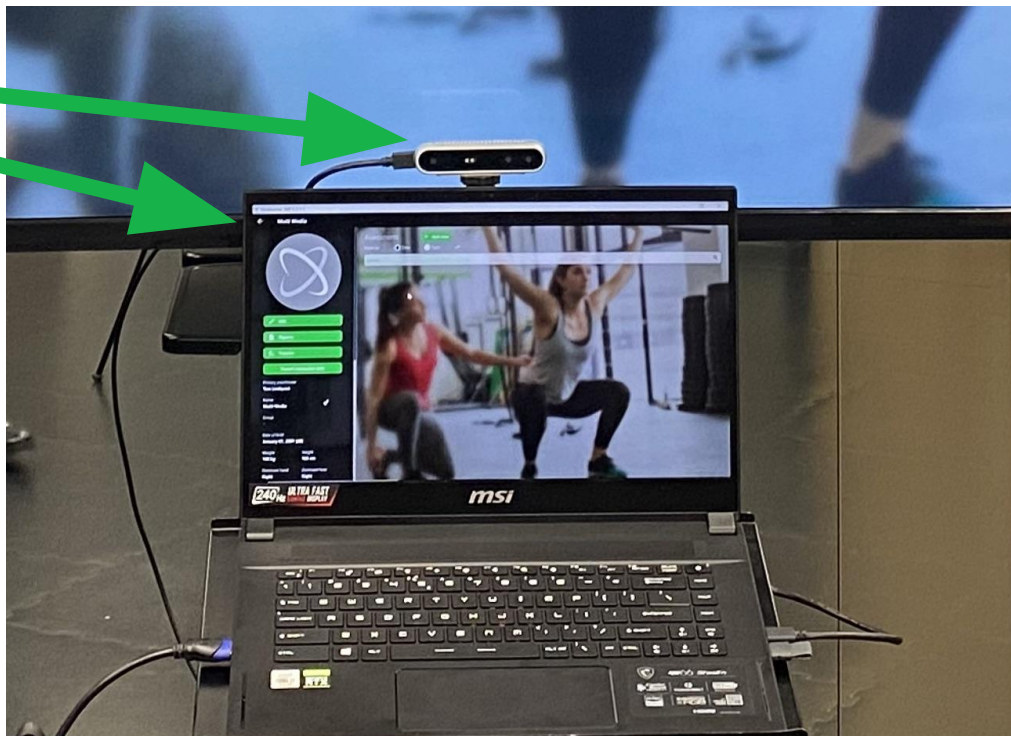
# Functional Training Room





# Portable

- Intel camera
- Computer
- Suction cup mount





# Clinical Uses

**Assess - Correct - Reassess**

**Actively engage clients**

**Objectively capture triplanar data**



# KAMS

## KAMS

- Identify mobility or stability issues in specific planes - rehab plan to correct, reassess
- KAMS worst movement, rehab plan to correct, reassess - Consists of functional movements: Trunk ROM, overhead squat, reverse lunge, vertical jump, single leg balance, posture angel
- KAMS indexes (balance, flexibility, power extremity), rehab plan to correct, reassess
- Intake screening
- Pre/mid/post season training





# ROM

## ROM

- Pre and post
  - MFR
  - CMT
  - Corrective exercises/ stretches
  - Surgery



# Posture

## Posture

- Identify regions of dysfunction and correct
- Pre and post tx
  - CMT
  - Postural corrective exercises/ stretches
  - Strength training
  - Soft Tissue



# Functional

## Functional:

Any movement front facing or angled 45 degrees from the camera

- Workplace ergonomics
- Sport specific biomechanics
- Gait



# Balance

## Balance

- Pre/post surgery (knee, shoulder, hip)
- SI Joint pain
- Pre/post injury athletes
  - Regain proprioception at injured area and keep client engaged as they watch their improvements
- Gait
  - Single leg stance
- Concussion
  - Workplace groups
    - EMS, Fire, Police services, military)
  - Athletes
    - Test local teams quickly for their baseline balance assessment before a concussion occurs. When a concussion occurs, compare baseline data to current data and know when they can return to play
  - Geriatrics
    - Medications
      - Assess pre-medication, post medication - affecting their balance
    - Risk of fall
      - Identify areas of concern / poor proprioception
      - Track progressions and regressions throughout treatment



# Single Leg Hop

## Single Leg hop

- ACL injury susceptibility (Objective data: varus valgus angle and collapse rate, Jump force, hip flexion)
- Comparing Unilateral scoring
- Lower extremity stability, mobility
- Endurance / rate of fatigue



# Workflow

## Workflows

- Personalized Clinical Screening
- Concussion Baseline testing (athletes/teams)
- Regional ROM workflows
- Lower extremity power/endurance (SLH, VJ, RL, OHS)



# Reports

## Reports

- Trend data (legacy reports, CSV file)
- Raw data and pictures to compare
- KAMS FPM results are of a clients interest



# ROI / Community screening

## Community Screening

- Sports Teams: High School and club teams (concussion or functional movement screens)
- Demographics: Senior facilities (risk of fall)
- Corporations: Workplace Wellness (ergonomics)





# CPT Billing Codes

CPT codes

Code	Module	Description	Medical Payment
97750	Posture, Balance, KAMS or Functional Movement	Physical performance test or measurement (eg, musculoskeletal, functional capacity), with written report, each 15 minutes	\$33.46
95851 or 95851-59 (separate and distinct)	ROM	Range of motion measurements and report (separate procedure); each extremity (excluding hand) or trunk section (spine).	\$19.70
97530	KAMS or Functional Movement	Therapeutic activities, direct (one-on-one) patient contact (use of dynamic activities to improve functional performance), each 15 minutes	\$35.17

**ENM (Office Visit) is a 95 code, so it can not be used at the same time as ROM, or the payments will be bundled**

Code	Module	Description	Note
97112	Functional Movement, Balance, Posture, ROM, KAMS	Therapeutic procedure, 1 or more areas, each 15 minutes; neuromuscular reeducation of movement, balance, coordination, kinesthetic sense, posture, and/or proprioception for sitting and/or standing activities	<a href="https://apps.ama-assn.org/CptSearch/user/search/cptSearchSubmit.do?locality=63&amp;keyword=movement">https://apps.ama-assn.org/CptSearch/user/search/cptSearchSubmit.do?locality=63&amp;keyword=movement</a> CPT@/Medicare Payment Search AMA (American Medical Association)

Arizona → \$34.10  
 California → \$33.07  
 Colorado → \$33.08  
 Florida → \$33.07  
 Illinois → \$33.11  
 Kansas → \$32.56  
 Maryland → \$33.07  
 Missouri → \$31.90  
 New York → \$33.07  
 Texas → \$33.07